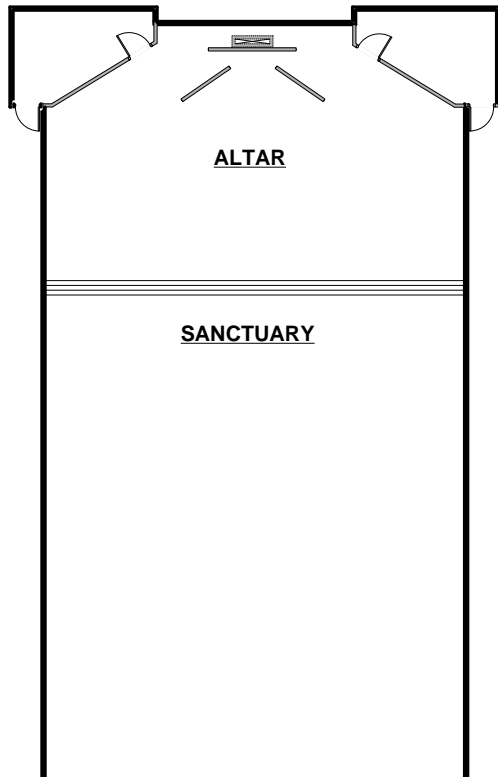


**SPARKS UNITED METHODIST CHURCH  
EXISTING FLOOR PLAN**

JUNE 2008

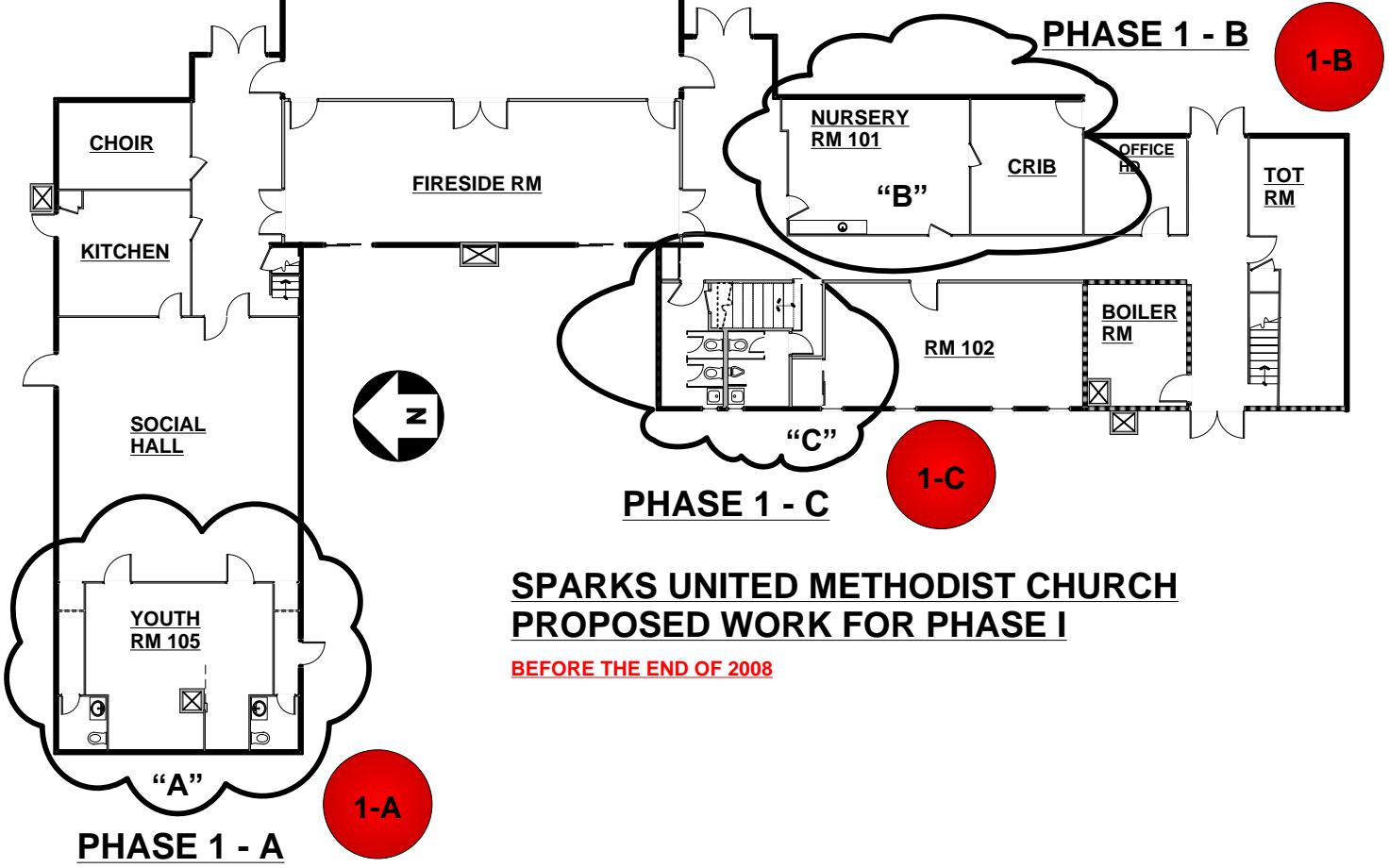




**PHASE 1 OF THE MASTER PLAN UPGRADES THE RESTROOM FACILITIES.**

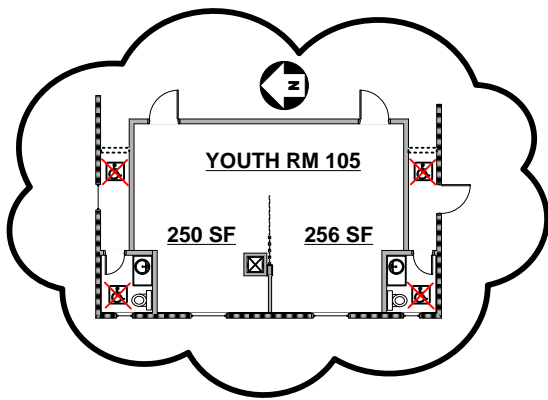
**TIMING IS "A" THEN "B" THEN "C":**

- **PHASE 1-A: THE SOCIAL HALL WILL HAVE 2 UNISEX RESTROOMS THAT MEET HANDICAP ACCESS REQUIREMENTS FOR THE LAVS AND COMMODES. NEW SHOWERS WILL BE INCORPORATED.**
- **PHASE 1-B: THE NURSERY & CRIB ROOMS CHANGE TO A SINGLE LARGER NURSERY AT THE SOUTH END & A HANDICAP ACCESSIBLE WOMEN'S RESTROOM AT THE NORTH END.**
- **PHASE 1-C: THE EXISTING TOILET AREAS BECOME A HANDICAP ACCESSIBLE MEN'S RESTROOM WITH TOT TOILETS IN RM 102.**

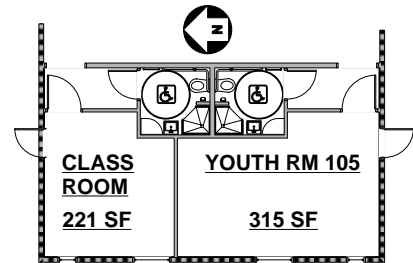
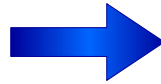


**SPARKS UNITED METHODIST CHURCH PROPOSED WORK FOR PHASE I**

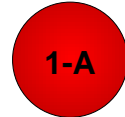
**BEFORE THE END OF 2008**



**EXISTING LAYOUT**



**PHASE 1- A**

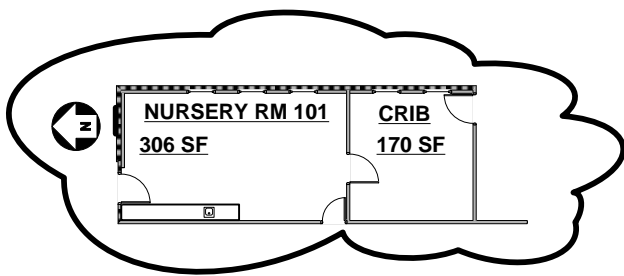


**PROPOSED WORK TO ACCOMPLISH PHASE 1- A**

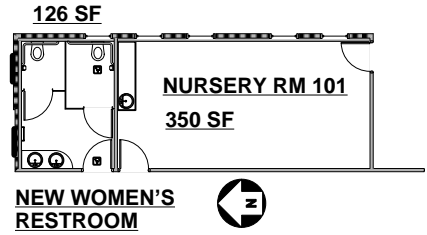
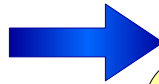
**PHASE 1 OF THE MASTER PLAN UPGRADES THE RESTROOM FACILITIES.**

**TIMING IS "A" THEN "B" THEN "C":**

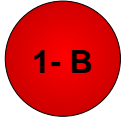
- **PHASE 1-A: THE SOCIAL HALL WILL HAVE 2 UNISEX RESTROOMS THAT MEET HANDICAP ACCESS REQUIREMENTS FOR THE LAVS AND COMMODES. SHOWERS ARE ADDED.**
- **CHIMNEY, PARTIAL SOLID WALL, & FOLDING PARTITION IN YOUTH RM ARE REMOVED.**
- **NEW CR (CLASSROOM) AND YOUTH ROOM w/ MORE USEABLE SPACE ARE CREATED EACH w/ AN EXTERIOR DOOR.**
- **YOUTH RM CHANGES FROM TWO SEMI-SEPARATED ROOMS w/ INTERIOR OBSTRUCTIONS (250 & 256 SQUARE FEET AREAS) TO ONE LARGER AREA (315 SF) THAT IS MORE OPEN FOR ACTIVITIES.**
- **A NEW CLASSROOM IS CREATED (221 SF).**
- **THE SOCIAL HALL GAINS UPGRADED HANDICAP ACCESSIBLE RESTROOMS WITH BETTER PUBLIC TRAFFIC ACCESS. SHOWERS ARE ADDED.**



**EXISTING LAYOUT**



**PHASE 1- B**

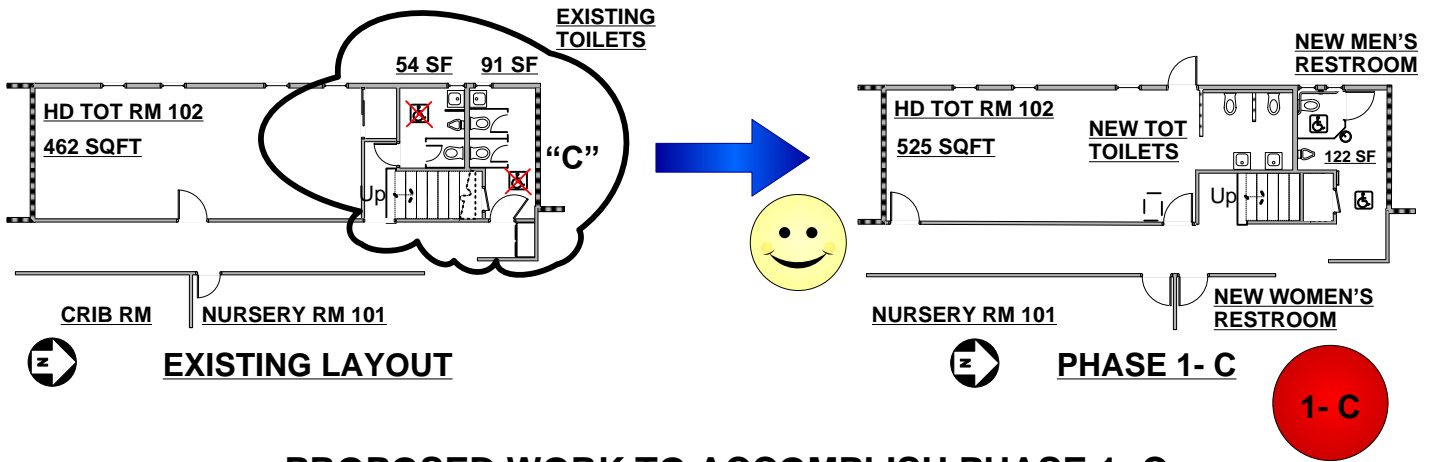


**PROPOSED WORK TO ACCOMPLISH PHASE 1- B**

**PHASE 1 OF THE MASTER PLAN UPGRADES THE RESTROOM FACILITIES.**

**TIMING IS "A" THEN "B" THEN "C":**

- **PHASE 1-B: THE NURSERY & CRIB ROOMS (306 SF & 170 SF AREAS) ARE CONSOLIDATED INTO A SINGLE, LARGER, NURSERY (350 SQUARE FOOT).**
- **THE EXISTING WOMEN'S TOILET MOVES ACROSS THE HALL, BECOMES A HANDICAP ACCESSIBLE RESTROOM... AND BECOMES LARGER (91 SF TO 126 SF).**
- **WOMEN' RESTROOM PROVIDES BETTER PUBLIC ACCESS .**
- **THE NEW WOMEN' RESTROOM GETS AN ADDITIONAL LAVATORY.**

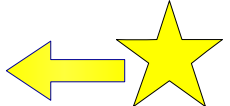


## PROPOSED WORK TO ACCOMPLISH PHASE 1- C

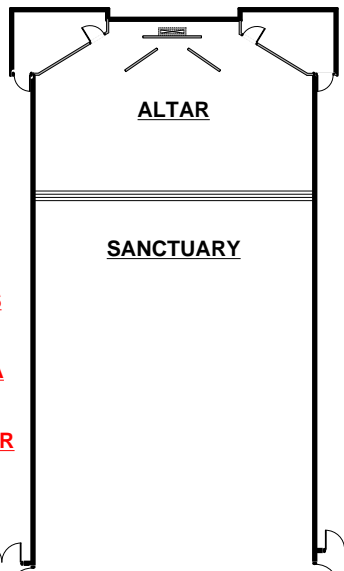
### PHASE 1 OF THE MASTER PLAN UPGRADES THE RESTROOM FACILITIES.

TIMING IS “A” THEN “B” THEN “C”:

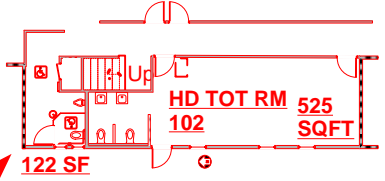
- 1-C: THE EXISTING MEN & WOMEN' TOILET AREAS BECOMES A HANDICAP ACCESSIBLE MEN'S RESTROOM w/ MORE SPACE (54 SF TO 122 SF).
- WALL CHANGES INCREASES LANDING AT THE BOTTOM OF STAIRS FOR SAFETY.
- WALL CHANGES AND OPENING OF LARGE CLOSET AREA INTO ROOM 102 INCREASES USUABLE FLOOR SPACE IN ROOM AND ALLOWS SPACE FOR 2 TOT TOILETS AND 2 LAVATORIES (462 SF TO 525 SF).
- EXTERIOR DOOR PROVIDES CHILDREN DIRECT ACCESS FROM PLAYGROUND TO NEW TOT TOILETS AND FACILITATES ADULT SUPERVISION DURING CHILD TRANSIT BETWEEN AREAS.
- NEW DOORS AT RM 101, RM 102, & NEW WOMEN'S RESTROOM PROVIDES ENHANCED PUBLIC ACCESS TO AREAS AND BETTER WORK FLOW FOR DAILY ACTIVITIES.



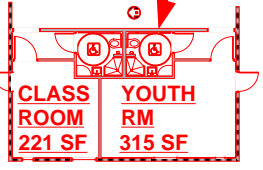
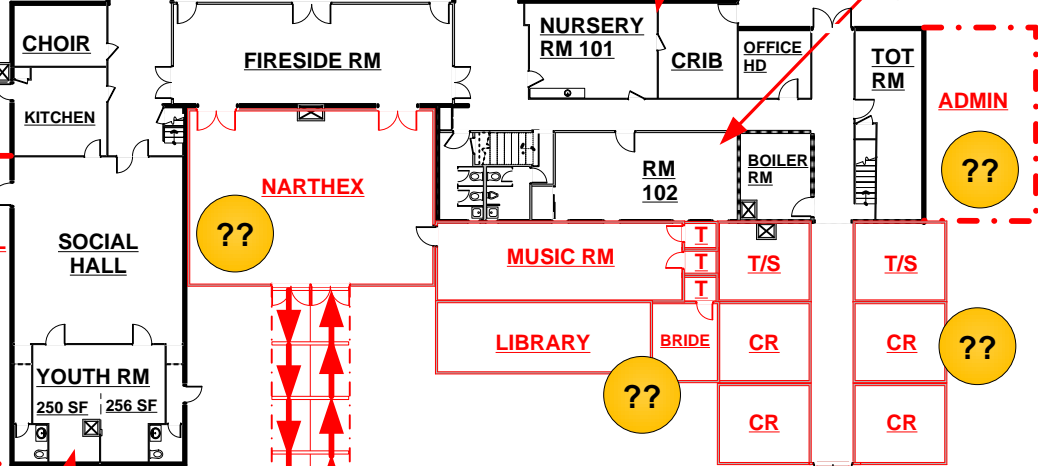
**CHURCH HOUSE/OFFICE:**  
 ONCE THESE FUNCTIONS  
 ARE MOVED, THE  
 VACATED AREA WILL BE  
 IMPROVED TO INCLUDE A  
 MULTI-SPORTS ACTIVITY  
 (BASKETBALL/TENNIS?)  
 w/ A PROTECTION BUFFER  
 FROM THE STREET OF A  
 JERSEY BARRIOR &  
 STORAGE FACILITY.



**NEW  
 WOMEN'S  
 TOILET**



**PHASE 1- C**



**PHASE 1-A**



**MAIN ENTRANCE - COVERED  
 WALK THRU COURTYARD**



**HAPPY DAYS**

- T TOILET
- T/S TOILET/SHOWER
- CR CLASSROOM
- SF SQUARE FEET
- PHASE I
- FUTURE

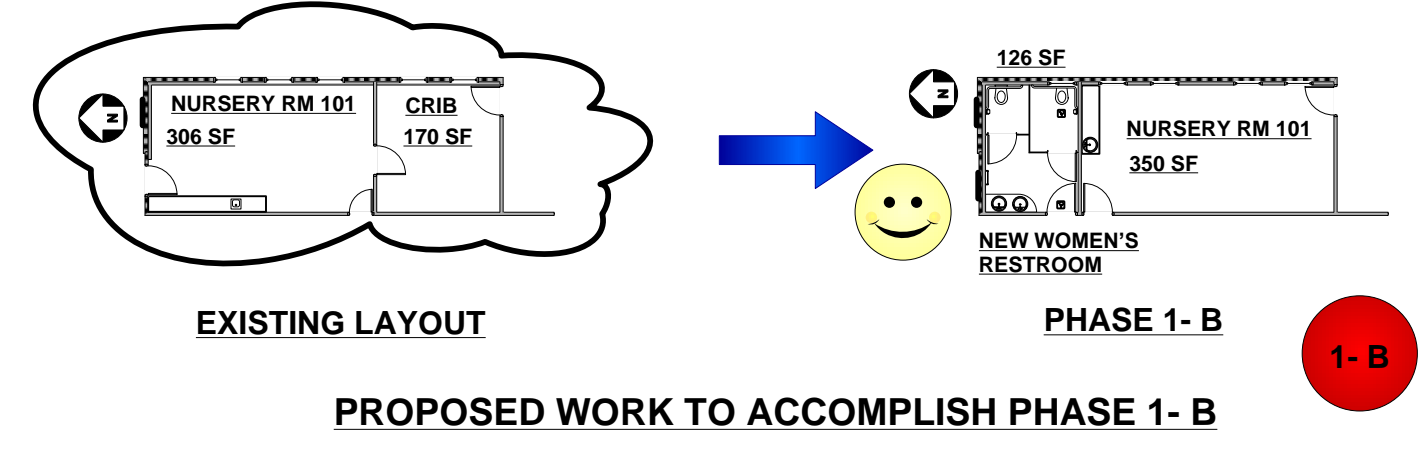


**SUMC'S BUILDING  
 MASTER PLAN  
 SPRING 2008**

**PHASE 1 OF THE MASTER PLAN UPGRADES THE RESTROOM FACILITIES.**

TIMING IS "A" THEN "B" THEN "C":

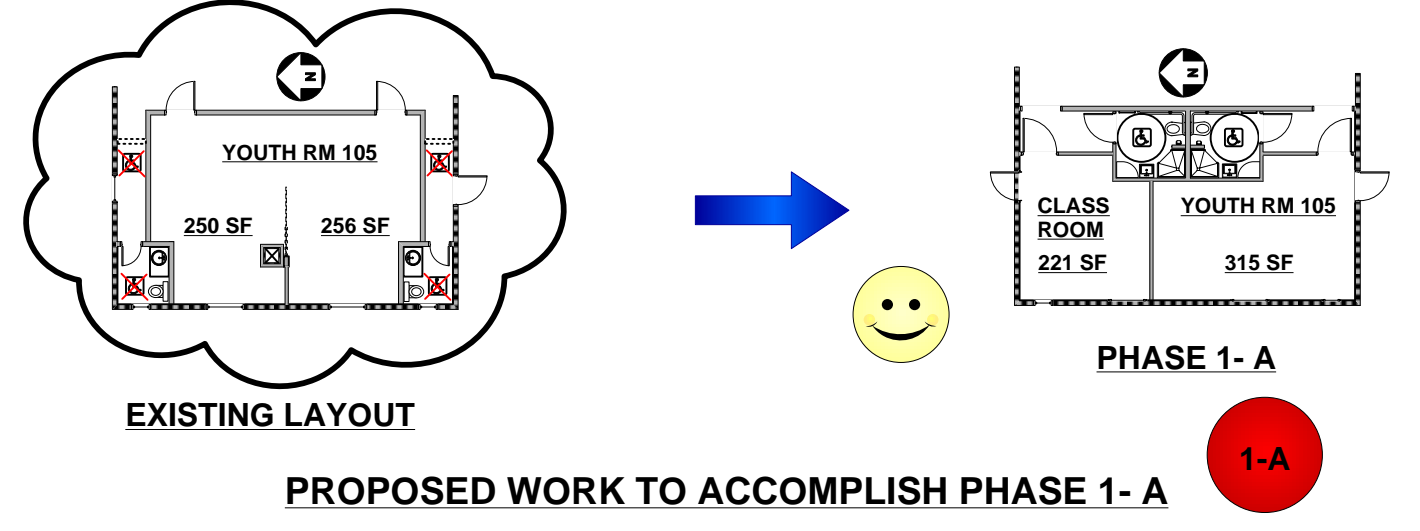
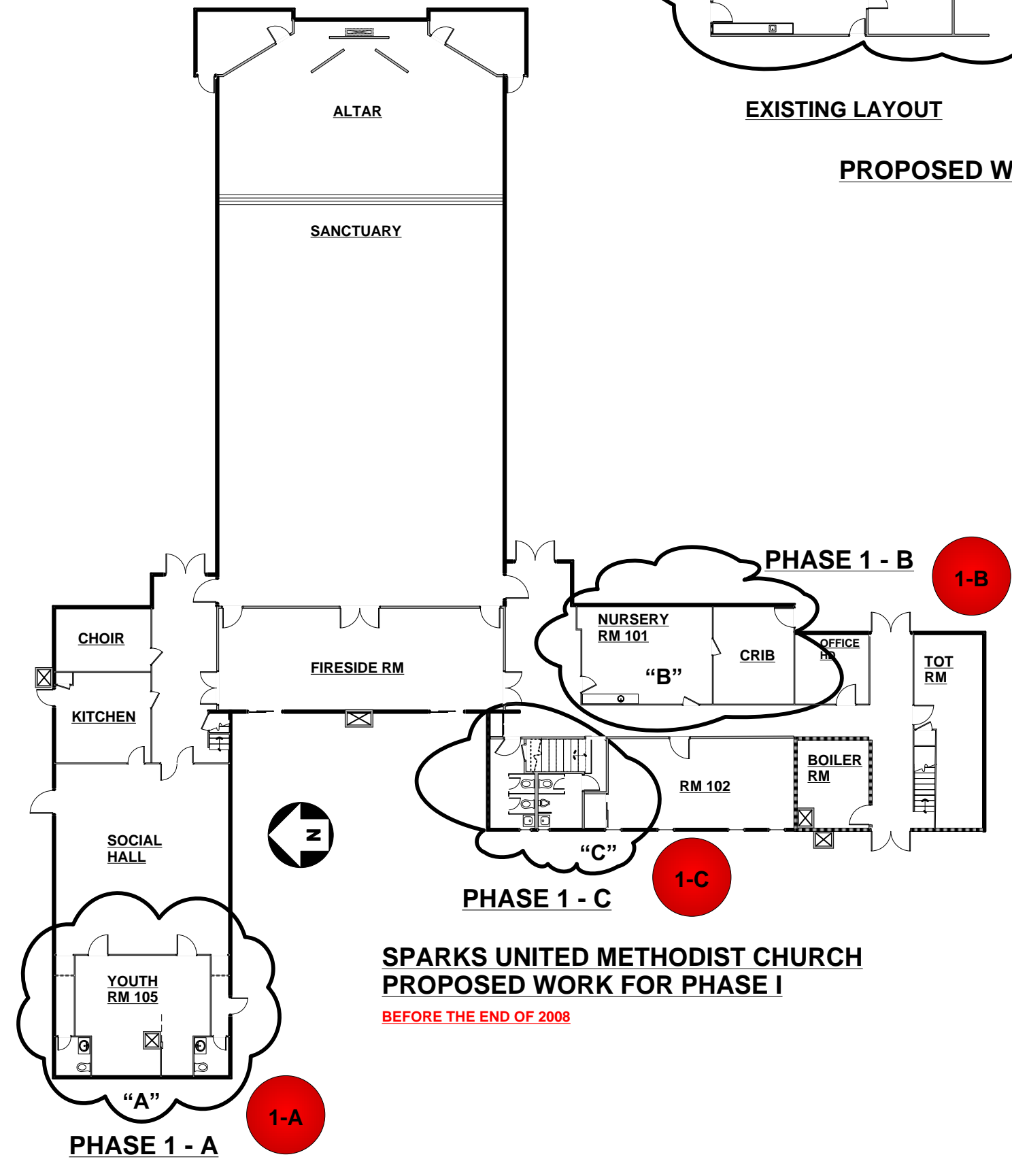
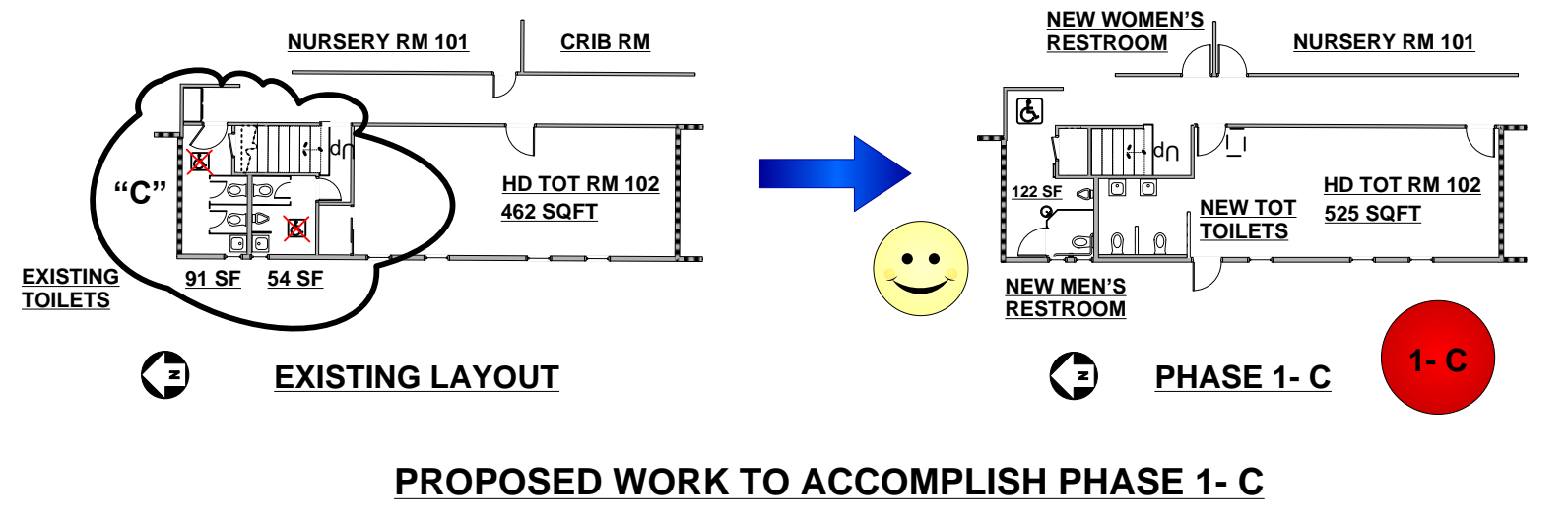
- PHASE 1-B: THE NURSERY & CRIB ROOMS (306 SF & 170 SF AREAS) ARE CONSOLIDATED INTO A SINGLE, LARGER, NURSERY (350 SQUARE FOOT).
- THE EXISTING WOMEN'S TOILET MOVES ACROSS THE HALL, BECOMES A HANDICAP ACCESSIBLE RESTROOM... AND BECOMES LARGER (91 SF TO 126 SF).
- WOMEN' RESTROOM PROVIDES BETTER PUBLIC ACCESS .
- THE NEW WOMEN' RESTROOM GETS AN ADDITIONAL LAVATORY.



**PHASE 1 OF THE MASTER PLAN UPGRADES THE RESTROOM FACILITIES.**

TIMING IS "A" THEN "B" THEN "C":

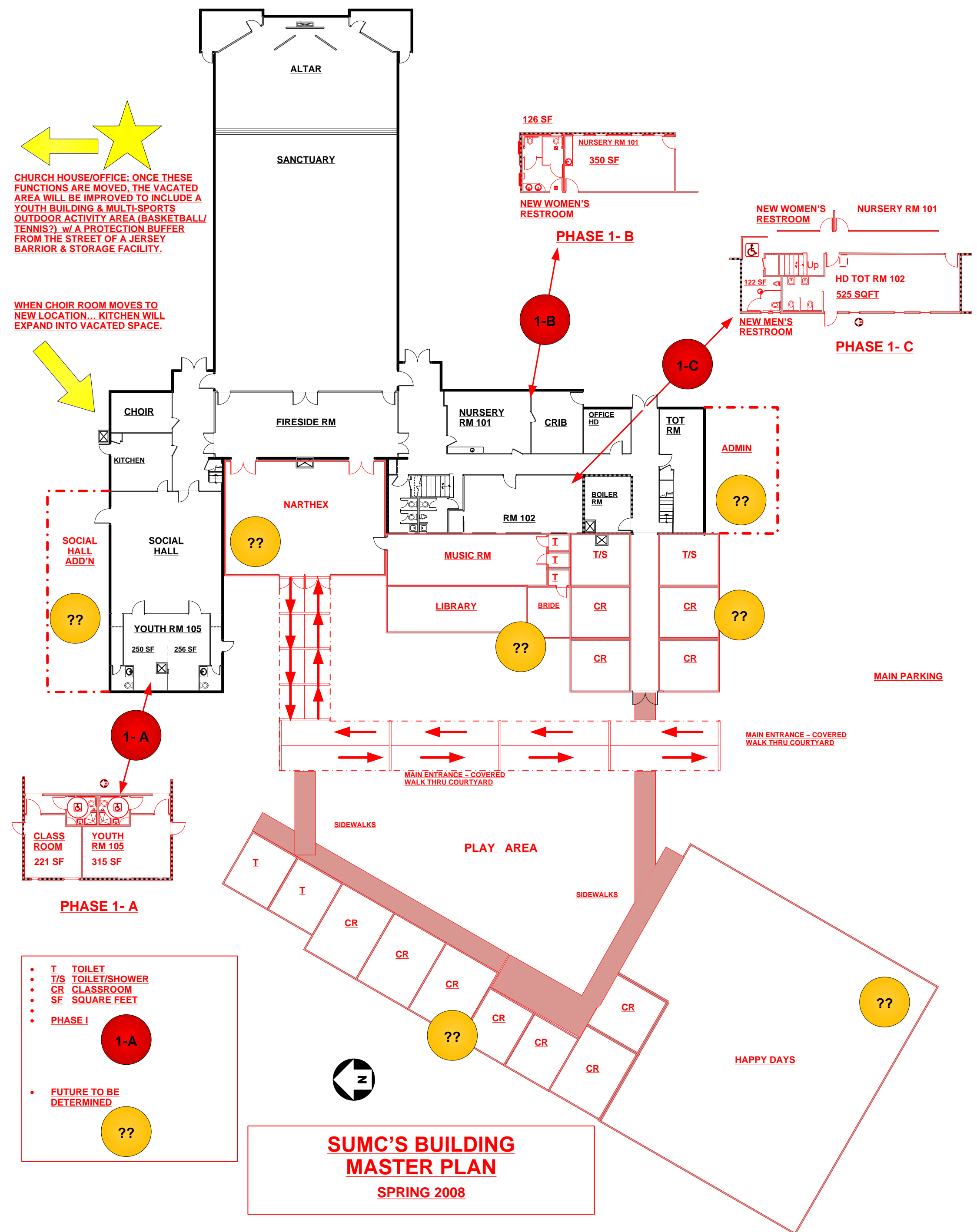
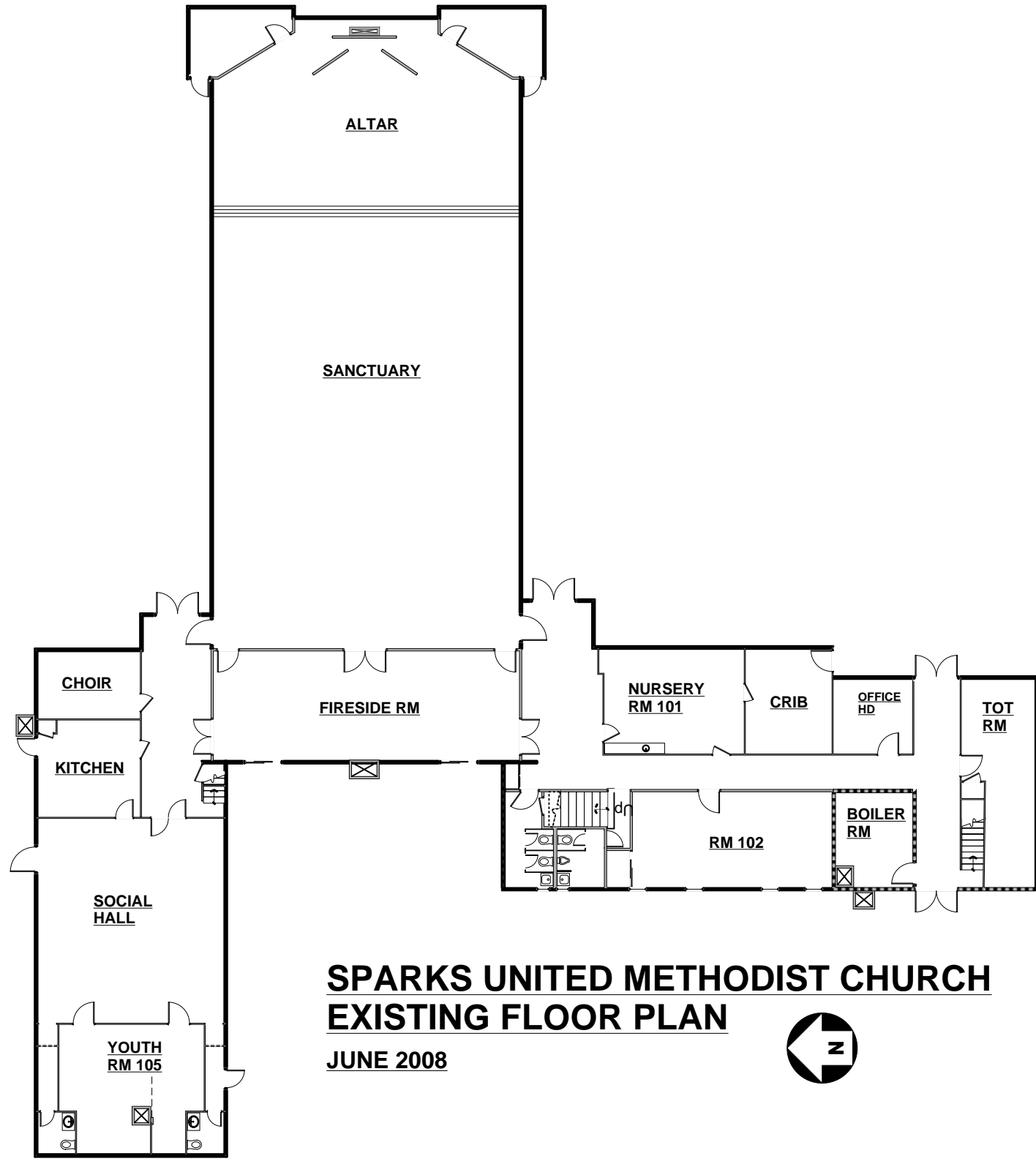
- 1-C: THE EXISTING MEN & WOMEN'S TOILET AREAS BECOMES A HANDICAP ACCESSIBLE MEN'S RESTROOM w/ MORE SPACE (54 SF TO 122 SF).
- WALL CHANGE INCREASES LANDING AT THE BOTTOM OF STAIRS FOR SAFETY.
- WALL CHANGE AND OPENING OF LARGE CLOSET AREA INTO ROOM 102 INCREASES USUABLE FLOOR SPACE IN ROOM AND ALLOWS SPACE FOR 2 TOT TOILETS AND 2 LAVATORIES (462 SF TO 525 SF).
- EXTERIOR DOOR PROVIDES CHILDREN DIRECT ACCESS FROM PLAYGROUND TO NEW TOT TOILETS AND FACILITATES ADULT SUPERVISION DURING CHILD TRANSIT BETWEEN AREAS.
- NEW DOORS AT RM 101, RM 102, & NEW WOMEN'S RESTROOM PROVIDES ENHANCED PUBLIC ACCESS TO AREAS AND BETTER WORK FLOW FOR DAILY ACTIVITIES.



**PHASE 1 OF THE MASTER PLAN UPGRADES THE RESTROOM FACILITIES.**

TIMING IS "A" THEN "B" THEN "C":

- PHASE 1-A: THE SOCIAL HALL WILL HAVE 2 UNISEX RESTROOMS THAT MEET HANDICAP ACCESS REQUIREMENTS FOR THE LAVS AND COMMODES. SHOWERS ARE ADDED.
- CHIMNEY, PARTIAL SOLID WALL, & FOLDING PARTITION IN YOUTH RM ARE REMOVED.
- NEW CR (CLASSROOM) AND YOUTH ROOM w/ MORE USEABLE SPACE ARE CREATED EACH w/ AN EXTERIOR DOOR.
- YOUTH RM CHANGES FROM TWO SEMI-SEPARATED ROOMS w/ INTERIOR OBSTRUCTIONS (250 & 256 SQUARE FEET AREAS) TO ONE LARGER AREA (315 SF) THAT IS MORE OPEN FOR ACTIVITIES.
- A NEW CLASSROOM IS CREATED (221 SF).
- THE SOCIAL HALL GAINS UPGRADED HANDICAP ACCESSIBLE RESTROOMS WITH BETTER PUBLIC TRAFFIC ACCESS. SHOWERS ARE ADDED.



**PHASE 1 OF THE MASTER PLAN UPGRADES THE RESTROOM FACILITIES.**

TIMING IS "A" THEN "B" THEN "C":

- PHASE 1-A: THE SOCIAL HALL WILL HAVE 2 UNISEX RESTROOMS THAT MEET HANDICAP ACCESS REQUIREMENTS FOR THE LAVS AND COMMODES. NEW SHOWERS WILL BE INCORPORATED.
- PHASE 1-B: THE NURSERY & CRIB ROOMS CHANGE TO A SINGLE LARGER, NURSERY AT THE SOUTH END & A HANDICAP ACCESSIBLE WOMEN'S RESTROOM AT THE NORTH END.
- PHASE 1-C: THE EXISTING TOILET AREAS BECOME A HANDICAP ACCESSIBLE MEN'S RESTROOM WITH TOT TOILETS IN RM 102.